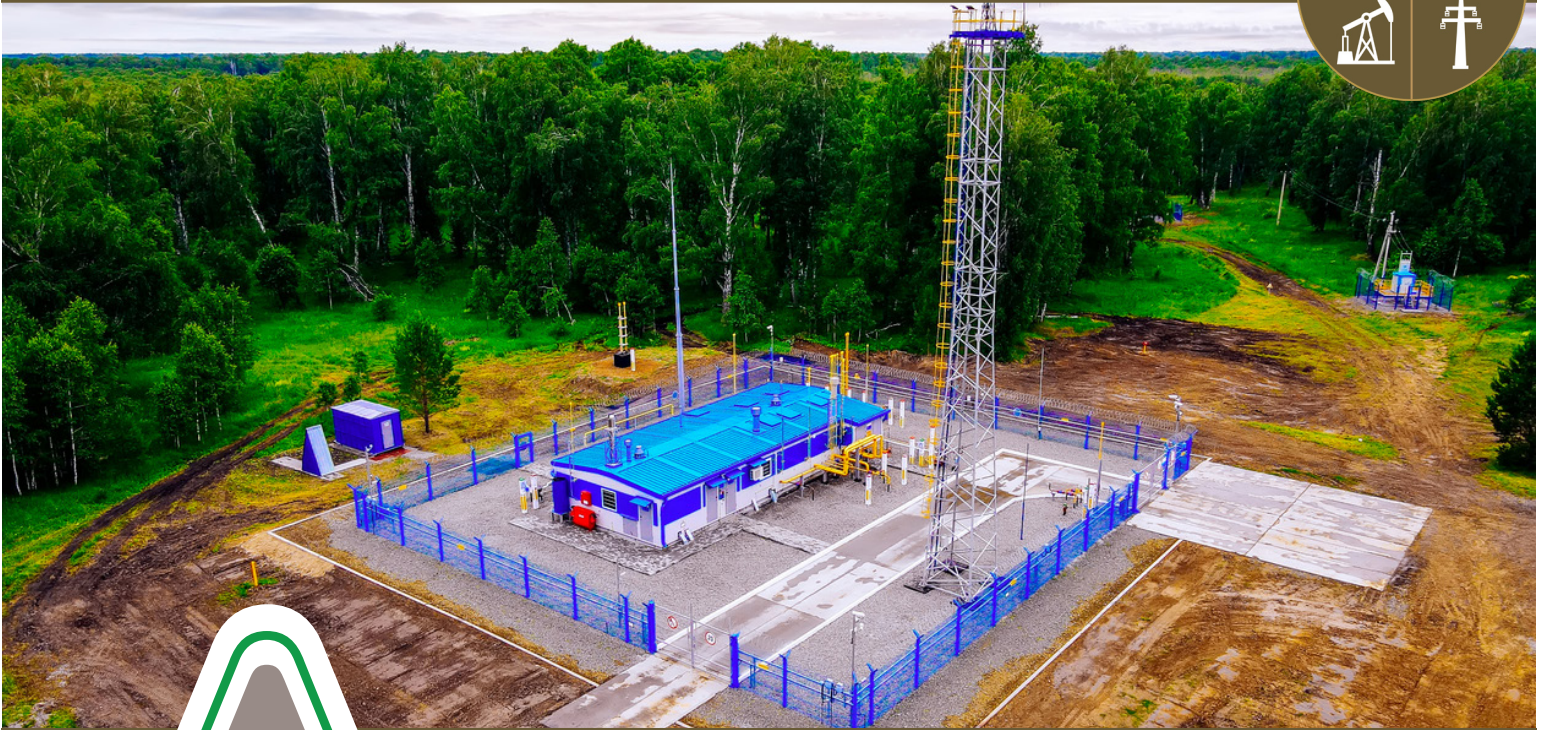
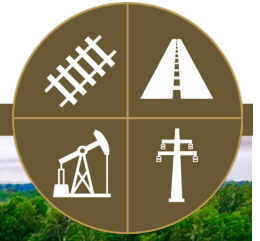


KROVAR IVM



ALLIGARE.COM

GIVE PROBLEM WEEDS THE ONE-TWO PUNCH

Alligare's Krovar IVM herbicide provides proven, season-long control of annual and perennial grasses and broadleaf weeds.

PERFORMANCE HIGHLIGHTS

- Consistent, historically-proven performance
- Tough on challenging annual and perennial weeds
- Provides long-lasting residual control
- Can be used under asphalt and other paved areas

FOR BEST RESULTS

1. Apply to moist soil or soil that has received precipitation within two weeks of application.
2. Applications should be made prior to weed germination.

USE SITES

- utility plant sites
- petroleum tank farms
- pumping installations
- roadsides and rights-of-way
- fence rows
- pipelines
- railroads
- storage areas



Alligare[®]
A member of the ADAMA Group

KROVAR IVM

ACTIVE INGREDIENTS: BROMACIL + DIURON



TARGETED WEEDS

Clover (annual)
Johnsongrass
Kochia
Spurge
Foxtail

Bluegrass
Pigweed
Wild carrot
Bermudagrass
Italian ryegrass

Cheat grass
Bahagrass
Plantain
Curly dock
Puncturevine

Horseweed
Crabgrass
Ragweed
Fescue
Russian thistle

MIXING INSTRUCTIONS

1. Fill the tank 1/4 to 1/3 full of water.
2. While agitating, add the required amount of Krovar IVM.
3. Continue agitation until the herbicide is fully dispersed.
4. Maintain agitation and continue filling the tank with water.
5. Add any tank mix partners (if desired), followed by the necessary volume of spray adjuvant.

NOTE: If the mixture is not continuously agitated, settling may occur. If settling occurs, thoroughly re-agitate before using.

ALWAYS READ AND FOLLOW LABEL INSTRUCTIONS

SIGNAL WORD

CAUTION

APPLICATION DETAILS

MOA Group 5 PSII Inhibitors
See label for specific application rates and instructions.

WORKER SAFETY

long-sleeved shirt and long pants
shoes plus socks
chemical-resistant gloves
chemical-resistant apron when mixing, loading, or cleaning equipment or spills

NIOSH-approved particulate respirator equipped with N, R, or P class filter media. The respirator should have a NIOSH approval number prefix TC-84A and it is recommended that you require the respirator wearer be fit-tested, and trained in the use, maintenance, and limitations of the respirator.



Alligare[®]

A member of the ADAMA Group